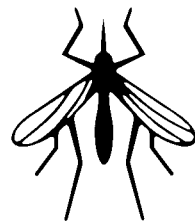


# Altosid<sup>®</sup>

## BRIQUETS



### A SUSTAINED RELEASE MOSQUITO GROWTH REGULATOR TO PREVENT ADULT MOSQUITO EMERGENCE

## SPECIMEN LABEL

#### ACTIVE INGREDIENT:

Methoprene [Isopropyl (E,E)-11-methoxy-3,7,11-trimethyl-2,4-dodecadienoate]

(Dry Weight Basis) . . . . . 8.62%

**OTHER INGREDIENTS:** . . . . . 91.38%

Total . . . . . 100.00%

This product contains water, therefore the weight of the briquet and percent by weight of active ingredient will vary with hydration. The Ingredient Statement is expressed on a dry weight basis.

EPA Reg No. 2724-375

KEEP OUT OF REACH OF CHILDREN  
**CAUTION**

#### PRECAUTIONARY STATEMENTS

**HAZARDS TO HUMANS  
AND DOMESTIC ANIMALS**

**CAUTION**

**ENVIRONMENTAL HAZARDS**

This product is toxic to aquatic dipteran. Using it in a manner other than that described by the label could result in harm to aquatic dipteran. Do not contaminate water when disposing of rinsate or equipment washwaters.

#### DIRECTIONS FOR USE

It is a violation of Federal Law to use this product in a manner inconsistent with its labeling.

#### NOTE TO USER

Do not remove **ALTOSID<sup>®</sup> Briquets** from container except for immediate use.

Because of the unique mode of action of **ALTOSID Briquets**, users must be familiar with special techniques for accurate evaluation of treatments. See **APPLICATION RATES AND INTERVALS** section of this label or consult local Mosquito Abatement Agency. Effective use of **ALTOSID Briquets** in sites subjected to periodic heavy flow of water requires careful attention to briquet placement and to the possible need for retreatment. Use of the product in storm drains, waste treatment and settling ponds, and similar systems should therefore be limited to experienced pesticide applicators such as personnel of Mosquito Abatement Districts and Public Health Agencies.

#### INTRODUCTION

The **ALTOSID Briquet** is a formulation designed to release effective levels of **ALTOSID<sup>®</sup> Insect Growth Regulator** over a 30 day period under typical environmental conditions. Release of **ALTOSID Insect Growth Regulator** is effected by dissolution of the **ALTOSID Briquet**. Obstructions, such as debris, vegetation, and loose sediment can cover the briquets and inhibit normal dispersion of the active ingredient. Such obstructions may occur after high rainfall or flow. The product may not be effective in those situations where the briquet can be removed from the site by flushing action. **ALTOSID Briquets** prevent the emergence of adult mosquitoes including *Anopheles*, *Culex*, *Culiseta*, *Coquillettidia*, and *Mansonia* spp., as well as those of the floodwater mosquito complex (*Aedes* and *Psorophora* spp.) from treated water. Treated larvae continue to develop normally to the pupal stage where they die.

## APPLICATION TIME

Placement of **ALTOSID Briquets** should be made at the beginning of the mosquito season. Under normal conditions repeat treatment every 30 days. Renew at the recommended interval and rate (see table). Continue treatment through the last brood of the season. Placement may be made at any stage of larval development.

**NOTE:** This insect growth regulator has no effect on mosquitoes which have reached the pupal or adult stage prior to treatment.

## APPLICATION SITES

**ALTOSID Briquets** are designed to control mosquitoes in small bodies of water. Examples of application sites are: storm drains, catch basins, roadside ditches, fish ponds, ornamental ponds and fountains, other artificial water-holding containers, cesspools and septic tanks, waste treatment and settling ponds, flooded crypts, transformer vaults, abandoned swimming pools, tires, construction and other manmade depressions, cattail marshes, water-hyacinth beds, vegetation-choked phosphate pits, pastures, meadows, rice fields, freshwater swamps and marshes, salt and tidal marshes, treeholes, woodland pools, floodplains, and dredging spoil sites. For application sites connected by a water system, i.e., storm drains or catch basins, all of the water holding sites in the system should be treated to maximize the efficiency of the treatment program.

## APPLICATION RATES AND INTERVALS

For mosquito control in non-(or low-) flow, shallow depressions (up to 2 ft in depth), treat on the basis of surface area placing one **ALTOSID Briquet** per 100 sq ft. For mosquito control in water subject to flow or deeper than 2 ft, treat on the basis of volume. Apply at the rate of one **ALTOSID Briquet** per 10 cu ft (75 gal of water). **ALTOSID Briquets** will maintain an effective concentration throughout four complete volume changes per 30 day treatment interval according to the following table.

## ALTOSID BRIQUETS FOR FLOWING WATER

Volume/Treatment Rate/Flow

Maximum Water VOLUME in Application Site	Basic Application Rate ( <b>ALTOSID Briquets</b> )	Allowable FLOW for 30 Day Mosquito Control
0-10 cu ft (75 gal)	1	up to 300 gal
10-20 cu ft	2	up to 600 gal
20-30 cu ft	3	up to 900 gal
30-40 cu ft	4	up to 1200 gal

In the event of higher flow, reduce the treatment interval proportionately using the following flow formula. Do not increase the application rate.

## FLOW ADJUSTMENT FORMULA

$$\frac{\text{Allowable Flow}^+}{\text{Actual Flow}} \times 30 = \text{Adjusted Treatment Interval (Days)}$$

+ 4 volume changes or see above table.

Example: For a 36 cu ft catch basin of low flow (up to 1200 gal per 30 days), treat with four **ALTOSID Briquets**. For higher flow, such as 2400 gal per 30 days, the treatment interval should be reduced to 15 days ( $1200/2400 \times 30 = 15$ ).

## STORAGE AND DISPOSAL

Do not contaminate water, food, or feed by storage or disposal.

### STORAGE

Store in cool, dry place.

### PESTICIDE DISPOSAL

Wastes resulting from use of this product may be disposed of on site or at an approved waste disposal facility.

### CONTAINER DISPOSAL

Triple rinse (or equivalent). Then offer for recycling or reconditioning, or puncture and dispose of in a sanitary landfill or incineration, or if allowed by state and local authorities, by burning. If burned, stay out of smoke.

Seller makes no warranty, express or implied, concerning the use of this product other than indicated on the label. Buyer assumes all risk of use and handling of this material when such use and handling are contrary to label instructions.

Always read the label before using this product.

For information call 1-800-248-7763 or visit our web site: [www.altosid.com](http://www.altosid.com).



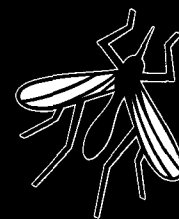
Wellmark International  
Schaumburg, Illinois U.S.A.



ALTOSID® Briquets, ALTOSID® Insect Growth Regulator, and ZOËCON® are registered trademarks of Wellmark International.  
©2000 WELLMARK

March 2000  
Schaumburg, IL

# Altosid<sup>®</sup> BRIQUETS



## Supplemental Labeling

All label restrictions and Directions for Use of Altosid<sup>®</sup> Briquets apply.  
Now Labeled for use in known fish habitats.

### ACTIVE INGREDIENT:

Methoprene [Isopropyl (E,E)-11-methoxy-3,7,11-trimethyl-2,4-dodecadienoate]  
(Dry Weight Basis):\* . . . . . 8.25%

**INERT INGREDIENTS:** . . . . . 91.75%

**TOTAL:** . . . . . 100.00%

\* US patents: 3,904,662 and 3,912,815

This product contains water, therefore the weight of the briquet and percent by weight of active ingredient will vary with hydration. The ingredient statement is expressed on a dry weight basis.

EPA Reg No. 2724-375-64833

KEEP OUT OF REACH OF CHILDREN  
**CAUTION**

### PRECAUTIONARY STATEMENTS

#### ENVIRONMENTAL HAZARDS

This product is toxic to aquatic dipteran. Using it in a manner other than that described by the label could result in harm to aquatic dipteran. Do not contaminate water when disposing of rancid or equipment washwaters.

#### DIRECTIONS FOR USE

It is a violation of Federal Law to use this product in a manner inconsistent with its labeling.

**STORAGE AND DISPOSAL:** Store in cool, dry place. Do not contaminate water, food, or feed by storage or disposal. Wastes resulting from use of this product may be disposed of on site or at an approved waste disposal facility. Triple rinse (or equivalent). Then offer for recycling or reconditioning, or puncture and dispose of in a sanitary landfill or incineration, or if allowed by state and local authorities, by burning. If burned, stay out of smoke.

Note to User: Do not remove ALTOSID<sup>®</sup> Briquets from container except for immediate use.

Because of the unique mode of action of ALTOSID Briquets, users must be familiar with special techniques for accurate evaluation of treatments. See Application Rates and Intervals section of this label or consult local Mosquito Abatement Agency. Effective use of ALTOSID Briquets in sites subjected to periodic heavy flow of water requires careful attention to briquet placement and to the possible need for retreatment. Use of the product in storm drains, waste treatment and settling ponds, and similar systems should therefore be limited to experienced pesticide applicators such as personnel of Mosquito Abatement Districts and Public Health Agencies.

**Introduction:** The ALTOSID Briquet is a formulation designed to release effective levels of ALTOSID<sup>®</sup> Insect Growth Regulator over a 30 day period under typical environmental conditions. Release of ALTOSID Insect Growth Regulator is effected by dissolution of the ALTOSID Briquet. Obstructions, such as debris, vegetation, and loose sediment can cover the briquets and inhibit normal dispersion of the active ingredient. Such obstructions may occur after high rainfall or flow. The product may not be effective in those situations where the briquet can be removed from the site by flushing action. ALTOSID Briquets prevent the emergence of adult mosquitos including Anopheles, Culex, Culiseta, Coquilletidia, and Mansonia spp., as well as those of the floodwater mosquito complex (Aedes and Psorophora spp.) from treated water. Treated larvae continue to develop normally to the pupal stage where they die.

**Application Time:** Placement of ALTOSID Briquets should be made at the beginning of the mosquito season. Under normal conditions repeat treatment every 30 days. Renew at the recommended interval and rate (see table). Continue treatment through the last brood of the season. Placement may be made at any stage of larval development.

**NOTE:** This insect growth regulator has no effect on mosquitoes which have reached the pupal or adult stage prior to treatment.

**Application Sites:** ALTOSID Briquets are designed to control mosquitoes in small bodies of water. Examples of application sites are: storm drains, catch basins, roadside ditches, fish ponds, ornamental ponds and fountains, other artificial water-holding containers, cesspools and septic tanks, waste treatment and settling ponds, flooded crypts, transformer vaults, abandoned swimming pools, tires, construction and other manmade depressions, cattail marshes, water hyacinth beds, vegetation-choked phosphate pits, pastures, meadows, rice fields, freshwater swamps and marshes, salt and tidal marshes, treeholes, woodland pools, floodplains, and dredging spoil sites. For application sites connected by a water system, i.e., storm drains or catch basins, all of the water holding sites in the system should be treated to maximize the efficiency of the treatment program.

**Application Rates and Intervals:** For mosquito control in non-(or low-) flow, shallow depressions (up to 2 ft in depth), treat on the basis of surface area placing one ALTOSID Briquet per 100 sq ft. For mosquito control in water subject to flow or deeper than 2 ft, treat on the basis of volume. Apply at the rate of one ALTOSID Briquet per 10 cu ft (75 gal of water). ALTOSID Briquets will maintain an effective concentration throughout four complete volume changes per 30 day treatment interval according to the following table.

**ALTOSID BRIQUETS FOR FLOWING WATER**  
Volume/Treatment/Rate Flow

Maximum Water VOLUME in Application Site	Basic Application Rate (ALTOSID BRIQUETS)	Allowable FLOW for 30 Day Mosquito Control
0 - 10 cu ft (75 gal)	1	up to 300 gal
10 - 20 cu ft	2	up to 600 gal
20 - 30 cu ft	3	up to 900 gal
30 - 40 cu ft	4	up to 1200 gal

In the event of higher flow, reduce the treatment interval proportionately using the following flow formula. Do not increase the application rate.

**FLOW ADJUSTMENT FORMULA**

$$\frac{\text{Allowable Flow}^\dagger}{\text{Actual Flow}} \times 30 = \text{Adjusted Treatment Interval (Days)}$$

† 4 volume changes or see above table  
Example: For a 36 cu ft catch basin of low flow (up to 1200 gal per 30 days), treat with four ALTOSID Briquets. For higher flow, such as 2400 gal per 30 days, the treatment interval should be reduced to 15 days (1200/2400 X 30 = 15).

**WARRANTY AND CONDITIONS OF SALE:** Seller makes no warranty, express or implied, concerning the use of this product other than indicated on the label. Buyer assumes all risk of use and handling of this material when such use and handling are contrary to label instructions.

For Information, call 1-800-248-7763.



1300 EAST TOUHY AVENUE, DES PLAINES, ILLINOIS 60018

ALTOSID® Briquets and ALTOSID® Insect Growth Regulator are registered trademarks of Sandoz Ltd. ©1997 SANDOZ AGRO, INC.

March 1997  
Des Plaines, IL  
97-24-0062